

# State of Wyoming Corner Record

(In compliance with the *CORNER PERPETUATION AND FILING ACT*, Wyoming Statutes, 1997 Section 33-29-140 et. seq., and the Rules and Regulations of the Board of Professional Engineers and Professional Land Surveyors)

Reverse side of this form may be used if more space is needed.

Record of original survey and citation of source of historical information (if corner is lost or obliterated). Description of corner monumentation evidence found and/or monument and accessories established to perpetuate the location of this corner. Sketch of relative location of monument, accessories, and reference points with course and distance to adjacent corner(s) (if determined in this survey). Method and rationale for reestablishment of lost or obliterated corner.

**LOCATION:** East Quarter Corner of Section 13, T13N, R68W, 6th Principal Meridian, Laramie County.

**RECORD:** 1871 - Set blue flint stone 13x9x9.

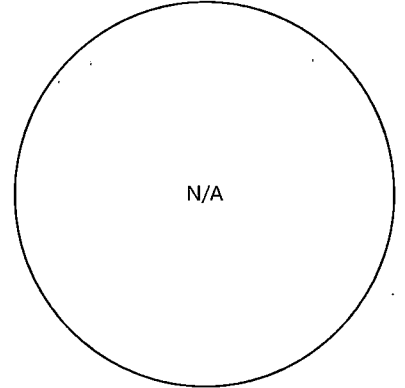
1991 - William Braman, LS 566, files corner record on found gray flint stone with 1/4 chiseled on it lying on its side and a 1/2" iron pipe. Braman notes the stone was earlier found disturbed and T.H. Baldwin set the 1/2" iron pipe proportionally.

1991 - Donald Hopkins, LS 558, files corner record on found marked stone and 1" iron pipe.

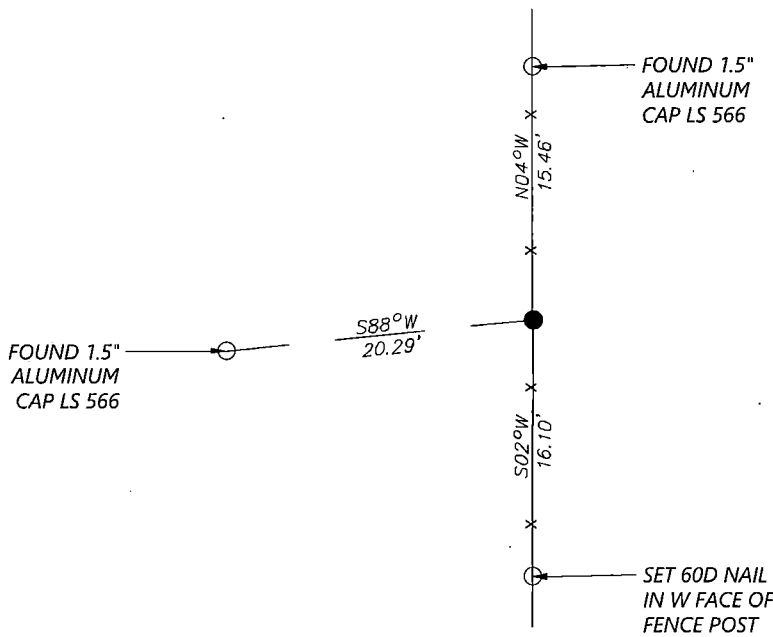
1991 - Chris Hamilton, LS 5297, files record on black metamorphic stone set firm and marked 1/4 on the east face. Also found reference points to the north and west.

**RECOVERED:** 2019 - Westwood field crews recover the stone and monument apparently set by T.H. Baldwin. Also found the references set by Braman in 1991.

**RESET:** Accepting location of the pipe as the location of the corner as described in Braman 1991 record. Set an additional tie as shown.



## Monument Inscription



Date of Field Work: 9/12/2019

Office Reference: 22237.01

### Cross Index Plat

	1	2	3	4	5	6	7	8	9	10	11	12	13	14	15	16	17	18	19	20	21	22	23	24	25		
A																											A
B																											B
C																											C
D																											D
E																											E
F																											F
G																											G
H																											H
J																											J
K																											K
L																											L
M																											M
N																											N
O																											O
P																											P
Q																											Q
R																											R
S																											S
T																											T
U																											U
V																											V
W																											W
X																											X
Y																											Y
Z																											Z
	1	2	3	4	5	6	7	8	9	10	11	12	13	14	15	16	17	18	19	20	21	22	23	24	25		

Firm/Agency, Address

Westwood Professional Services  
 3701 12th St. N. Ste. 206  
 St. Cloud, MN 56303

Telephone Number: (320)-253-9495

This corner record was prepared by me or under my direction and supervision.

SEAL & SIGNATURE



**RECP #: 775841**  
**RECORDED 4/15/2020 AT 10:16 AM BK# 2668 PG# 273**  
 Debra K. Lee, CLERK OF LARAMIE COUNTY, WY PAGE 1 OF 1

Corner Name East Quarter Corner Section 13, T 13 N, R 68 W, 6th P.M.

Cross-Index No.: L-25

County: Laramie Wyoming

SBRPEPLS/PLSW: March 1994; PLSW January 1998